

Critical Disability Studies: A Panel of Emerging Scholars at UMD

Wednesday, October 8, 2014, 3-5pm
6137 McKeldin, Special Events Room
ASL Interpreted

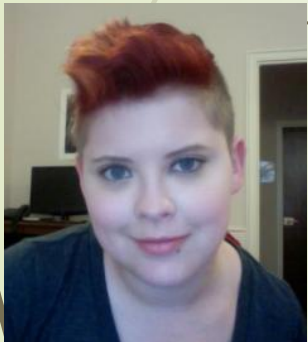


Angel Miles

PhD Candidate, Women's Studies

Izetta Autumn Mobley

PhD Student, American Studies



Mollie Greenberg

PhD Student, Sociology



Emma Sullivan

MEd Student, Special Education and Severe Disabilities

In honor of the semester-long Rise Above Ableism campaign and Disability Awareness Month, please join four emerging Critical Disability Scholars at the University of Maryland as they discuss their work. Co-sponsored by the Office of Diversity & Inclusion and the President's Commission on Disability Issues. Questions? Email Beth Douthirt-Cohen, bdc1@umd.edu